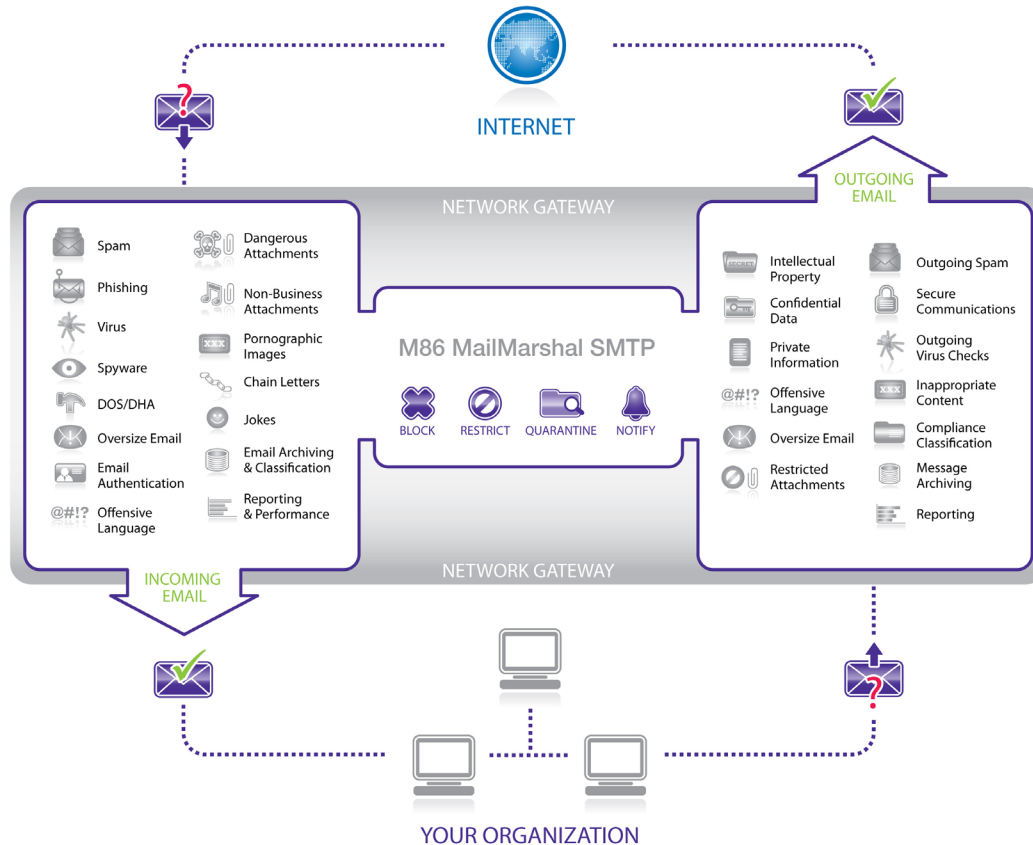


# M86 MailMarshal™ SMTP 6.8

## Email Gateway Security

Protecting your organization's email environment against spam and malware while managing complex compliance policies and preventing confidential data leakage can be a daunting challenge. M86 MailMarshal SMTP achieves all this within a single solution that meets the scalability, flexibility and centralized management needs of even the largest enterprises. M86 MailMarshal provides true email security for organizations of all sizes.



## OVERVIEW

M86 MailMarshal SMTP is a versatile, powerful and scalable email security system for use in any network environment. It integrates email threat protection, inbound/outbound content analysis, policy enforcement, compliance and data leakage prevention into a single, flexible and easy-to-manage solution.

M86 MailMarshal acts as a gateway to your organization by filtering all email sent and received at your network/Internet perimeter. It blocks incoming email threats such as spam, phishing, viruses, malware and Denial of Service attacks. M86 MailMarshal also enforces Acceptable Use Policies and ensures compliance with data leakage prevention policies. It can be deployed as a standalone solution or multiple, distributed M86 MailMarshal servers can be easily configured into an array to support the largest networks with centralized management for streamlined administration.

## KEY FEATURES

- Best-of-breed protection against spam and phishing
- Protection from viruses, malware and blended threats
- Inbound content security (deep content inspection)
- Outbound acceptable use and compliance policy enforcement
- Data Leakage Prevention (DLP) technology
- Secure, automatic email encryption
- Message Archiving
- Pornographic Image Detection (optional)
- Denial of Service (DoS) and directory harvesting attack prevention
- Reporting and message classification
- Comprehensive enterprise management

## KEY BENEFITS

### Secures Your Email Gateway Against All Threats

M86 MailMarshal restores the true business value of email, making it safe and efficient to use. It protects against all email threats including spam, phishing, viruses, malware, blended threats, directory harvesting attacks, DoS attacks and spoofed messages.

### Rapid Return on Investment

Useful management reports highlight anti-spam and security effectiveness as well as identifying attempted policy breaches, enabling system administrators to demonstrate a rapid return on investment to stakeholders and executives.

### Low Total Cost of Ownership

Easy deployment, minimal administration overhead, consolidation of all email security functions into a single management interface along with zero-day security, anti-spam updates, and detailed but clear reporting are all part of what makes M86 MailMarshal the ultimate email security solution.

### Enforces Compliance and Data Leakage Prevention Policies

M86 MailMarshal enables organizations to place restrictions on who can send confidential information via email and what data can be sent. It ensures that sensitive communications are secured against prying eyes. M86 MailMarshal also provides context-sensitive email archiving, such as storing all messages on a related topic or all email exchanges with specific domains.

### Provides Comprehensive Legal Liability Protection

Inappropriate/offensive content is filtered out of incoming email and outgoing messages are automatically checked for policy compliance. M86 MailMarshal allows organizations to demonstrate that all reasonable measures to protect employees and fairly enforce policies are in place.

### Improves Network Efficiency And Saves Costs

By controlling bandwidth consumption M86 MailMarshal maintains consistent and reliable network performance and prevents excessive non-business email use.

### Improves Employee Productivity

Implementing M86 MailMarshal means that employees spend less time managing spam and helps organizations enforce acceptable use policies to control personal email or other time-wasting, non-business activities.

### Safeguards Business Reputation

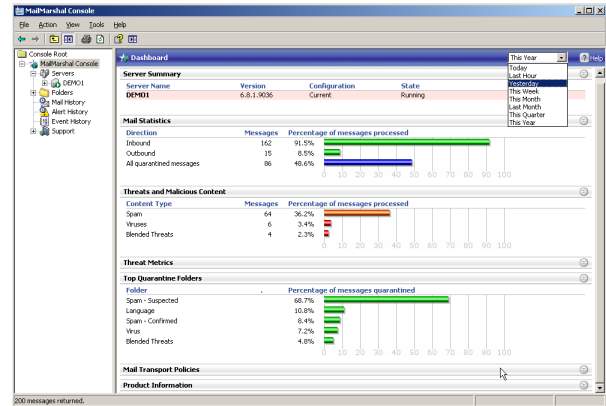
M86 MailMarshal prevents the unauthorized distribution of confidential or sensitive information via email and ensures that users are not in a position to embarrass your organization through inappropriate content or offensive conduct.

### Creates A Safer Working Environment For Employees

Through consistent and thorough application of security and acceptable use policies, issues such as sexual or racial harassment via email can be prevented.

"The anti-spam engine has blocked almost all the spam entering our mail gateway. Thanks to M86 MailMarshal, SunRice email users now simply do not expect to receive spam."

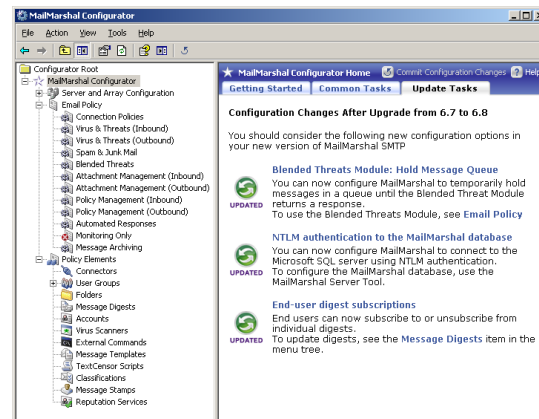
- Michael Browning, Senior Systems Engineer, Sunrice



THE M86 MAILMARSHAL CONSOLE PROVIDES A DASHBOARD VIEW OF YOUR EMAIL ENVIRONMENT.

*"We specifically sought a solution that would be easy to manage and update, as well as being highly flexible to seamlessly adapt to changing organizational needs or government ICT legislation, and M86 MailMarshal satisfied all these requirements."*

- Anthony Southgate, General Manager For Security Division, Internet Solution



THE M86 MAILMARSHAL CONFIGURATOR IS WHERE YOU DEFINE YOUR ORGANIZATION'S POLICIES.

## SOLUTIONS FOR ALL TYPES OF ORGANIZATIONS

M86 MailMarshal is one of the world's most successful and popular email security solutions. It is used by more than 10,000 organizations, including 40% of the world's Fortune 500 companies. M86 MailMarshal customers range from small businesses with fewer than 25 employees to universities, multi-national corporations and government agencies with hundreds of thousands of users. The majority of M86 MailMarshal customers have used it for more than three years and when asked in a recent survey, 97% said that they would recommend M86 MailMarshal to others. It is renowned for its ease of use, performance and reliability.

M86 MailMarshal SMTP can be deployed as a standalone gateway solution or multiple servers can be connected to form an array capable of supporting the largest enterprise environments.

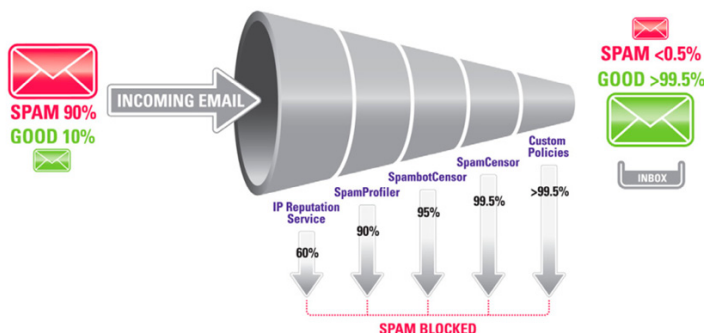
M86 MailMarshal's Array Manager Architecture allows you to administer multiple, geographically distributed servers and gateways with consolidated management, reporting, performance counters and central policy configuration. M86 MailMarshal SMTP allows you to build a fault-tolerant, load-balanced environment with a minimum of complexity and cost.

## FEATURES – THREAT PROTECTION

### Spam & Phishing Protection

- The M86 MailMarshal Defense-in-Depth anti-spam engine combines layers of spam filters for unsurpassed protection, performance and accuracy. It achieves a consistent 99.5% spam catch rate with near zero false positives with no special tuning or ongoing administration.
- Dynamic anti-spam updates are provided via the M86 Security Labs update service every 60 seconds along with weekly heuristic filter updates.
- Includes the M86 IP Reputation Service, which can proactively reject over 50% of incoming spam, enabling significant bandwidth savings.
- Provides proprietary Automated Adaptive Whitelist technology to track your email partners and ensures that messages from trusted sources are not blocked as spam. No need to manually create or maintain whitelists.
- Provides complete anti-spam reporting including individualized reports for employees and comprehensive end-user spam quarantine release functionality.

### M86 MAILMARSHAL ANTI-SPAM ENGINE

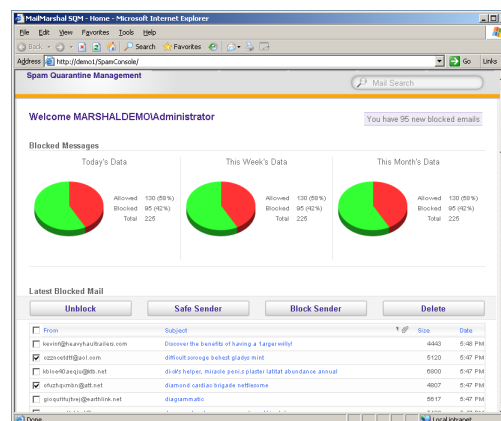


### Virus, Malware & Blended Threats Protection

- Provides seamless anti-virus integration via a range of supported vendors, including McAfee, Norman, Sophos, and Symantec.
- Supports integration with dedicated anti-spyware scanners, including CounterSpy and CA Anti-Spyware for Enterprises.
- The optional M86 Blended Threats Module specifically targets malicious URLs embedded in messages, utilizing the M86 cloud-based malware behavior analysis service.
- Detects and unpacks archive file types, identifying viruses recursively embedded within attachments.
- Identifies and blocks dangerous file types by their content and MIME type, thus detecting mislabeled attachments.
- Provides deep content analysis of all email components to identify and quarantine messages containing potentially harmful code or URL links to known malicious Web sites.
- Applies virus protection to both incoming and outgoing email and provides full virus and malware reporting.

### Denial of Service & Directory Harvesting Attack Protection

- Detects and manages suspicious behavior such as rapid concurrent connections from a single IP address or multiple emails sent to invalid email addresses.
- When suspected Denial of Service or Directory Harvesting Attacks are detected, connection attempts from the offending SMTP server are rejected. Normal service resumes automatically after a defined period.



THE M86 MAILMARSHAL SMTP SPAM QUARANTINE MANAGEMENT CONSOLE (SQM) ENABLES END-USERS TO REVIEW SPAM BLOCKED FOR THEM AND RELEASE MESSAGES THEY WISH TO RECEIVE.

## FEATURES – CONTENT ANALYSIS

### Comprehensive Security

- Enforces any policy based on virtually any message attribute. Control messages based on:
  - Who the message involves (sender, recipient, IP address)
  - What the message contains (spam, malware, keywords and phrases, message size, file attachments, alphanumerical patterns)
  - Actions you would like to take (block, delete, archive, delay, encrypt, copy, notify an email address, strip an attachment, classify the message for reporting)
- Almost any desired policy can be automatically enforced with M86 MailMarshal.

### Inbound Content Security

- Take a range of actions on incoming email messages based on any pre-defined condition.
- Reject messages exceeding a specified size limit or messages from any blacklisted IP address, domain or country.
- Control inbound messages based on the presence of restricted file types, the number of attachments or inappropriate keywords.
- Implement policies by user, department, special group or domain – or across the entire organization.
- Provide visibility of the security of incoming email through comprehensive reporting and email notifications.
- Manage email authentication and anti-spoofing through Sender ID and Sender Policy Framework standards support.

### Outbound Policy Enforcement and Compliance Management

- Automatically applies policy to outgoing messages.
- Enforces policies related to outgoing message size, attachments, keywords or recipient.
- Blocks profane or inappropriate language in outgoing email.
- Upholds corporate policies and ensures messages comply with legal requirements.
- Automatically adds disclaimers or encrypts communications based on policy.
- Automatically archives all outgoing (and incoming) communications to meet any legal obligations.
- Provides full reporting on outbound email content and attempted policy breaches.
- Provides sample policy templates including SOX and HIPAA.

### Data Leakage Prevention

- Features file fingerprint technology to manage the distribution of confidential files and intellectual property.
- Quarantines any restricted file being sent by an unauthorized user and sends notifications to nominated email addresses.

## Secure Email

- Provides built-in gateway-to-gateway TLS encryption to secure confidential communications or ensure regulatory requirements are complied with.
- Interfaces to an optional S/MIME PKI encryption module, M86 MailMarshal Secure Email Server (SES). M86 MailMarshal SES provides comprehensive email encryption and digital signing facilities with full certificate/key management and automatically maintains encryption user groups through LDAP.
- Supports M86 MailMarshal SendSecure for Web-based Business-to-Consumer (B2C) secure communication.

## Message Archiving

- Automatically archives messages on a daily basis.
- Allows messages to be archived according to conditions such as who the message was from or what it relates to.
- Permits messages to be retained indefinitely or automatically deleted after a defined retention period.
- Makes it easy to locate important messages through powerful search facilities and provides full reporting of archived email.

## Pornographic Image Detection (optional)

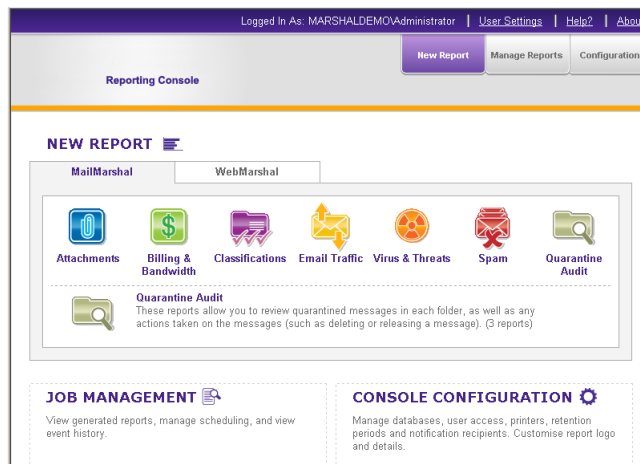
- Image Analyzer™ for M86 MailMarshal is an optional module for identifying inappropriate or pornographic images using deep image analysis which is applied to a range of supported image file formats.
- Image Analyzer for M86 MailMarshal helps prevent exposure to offensive content and educates users on what is deemed appropriate.

## Reporting and Message Classification

- Provides comprehensive security and email activity reporting
- Schedule reports with email delivery options in a range of output formats including Excel, MHTML and PDF.
- Review bandwidth reports by sender, recipient, domain and file-type.
- Analyze anti-spam performance by user via individualized Web-based reports.
- Allows you to sort and store messages based on content and run reports on stored messages for auditing.
- View anti-spam/anti-virus performance, attempted policy breaches and identify potential email abusers through security reports.

## Enterprise Management

- Provides administrative features designed to streamline maintenance and minimize administrative overhead.
- Automates importing and maintenance of email account information through comprehensive LDAP and Active Directory support.
- Simplifies configuration changes with one-click synchronization to all servers via the M86 MailMarshal Array Manager.
- Consolidates logging and quarantine data so message release can be performed from one central console.
- Enables advanced message management with sophisticated routing and relaying tables and flexible delivery options.
- Summarizes all email traffic information across an array with performance counters and the M86 MailMarshal dashboard.



THE M86 REPORTING CONSOLE PROVIDES WEB-BASED ACCESS TO A WIDE RANGE OF EMAIL REPORTS.

## SYSTEM REQUIREMENTS

HARDWARE	Minimum	Recommended*
<b>Processor</b>	Pentium 4 or equivalent	Pentium Core 2 Duo 3.0 GHz or higher
<b>Disk Space</b>	20GB (NTFS) or higher	160GB (NTFS) or higher
<b>Memory</b>	1GB RAM or higher	2GB RAM or higher
<b>SOFTWARE Operating System</b>	Windows Server 2008/Windows 7/Windows Vista/Windows Server Standard or Enterprise 2003 SP2 or later/Microsoft Small Business Server 2003 & 2008/Windows XP Professional SP3 or later (MailMarshal SMTP supports 32-bit mode running on 64-bit operating systems)	
<b>Database</b>	SQL Server 2008 / SQL Server 2008 Express/SQL Server 2005/SQL Server 2005 Express	

\*These requirements are recommended for a 100 user organization desiring high performance and sufficient resources for 12 months of report logging and email archiving.

**PLEASE NOTE:** For more information on hardware requirements for larger organizations, please contact your local M86 Security Sales Representative.

## ABOUT M86 SECURITY

M86 Security is the global expert in real-time threat protection and the industry's leading Secure Web Gateway provider. The company's appliance, software, and Software as a Service (SaaS) solutions for Web and email security protect more than 24,000 customers and over 17 million users worldwide. M86 products use patented real-time code analysis and behavior-based malware detection technologies as well as threat intelligence from M86 Security Labs to protect networks against new and advance threats, secure confidential information, and ensure regulatory compliance. The company is based in Orange, California with international headquarters in London and development centers in California, Israel, and New Zealand.

## TRY BEFORE YOU BUY

M86 Security offers free product trials and evaluations. Simply contact us or visit [www.m86security.com/downloads](http://www.m86security.com/downloads)



**Corporate Headquarters**  
828 West Taft Avenue  
Orange, CA 92865  
United States  
Phone: +1 (714) 282-6111  
Fax: +1 (714) 282-6116

**International Headquarters**  
Renaissance 2200  
Basing View, Basingstoke  
Hampshire RG21 4EQ  
United Kingdom  
Phone: +44 (0) 1256 848 080  
Fax: +44 (0) 1256 848 060

**Asia-Pacific**  
Millennium Centre, Bldg C, Level 1  
600 Great South Road  
Ellerslie, Auckland, 1051  
New Zealand  
Phone: +64 (0) 9 984 5700  
Fax: +64 (0) 9 984 5720

Version 04/21/10