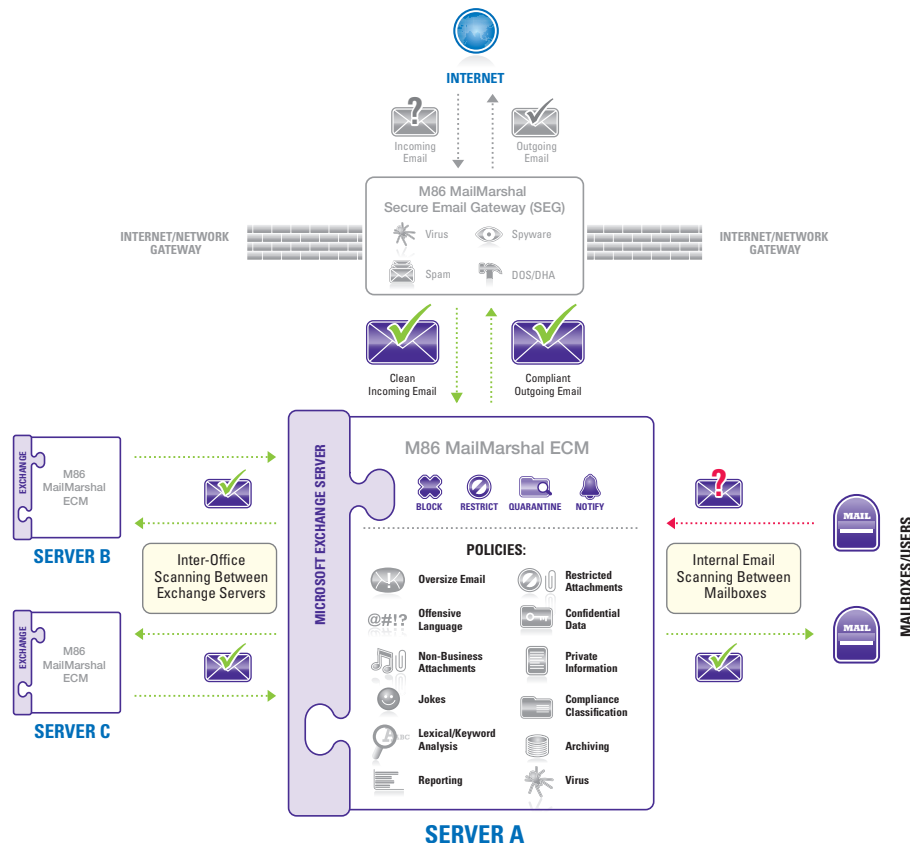


# M86 MailMarshal Email Content Manager (ECM)<sup>™</sup>

## Compliance and Policy Management for Microsoft Exchange Server 2007 and 2010

M86 MailMarshal Email Content Manager (ECM) is a powerful, flexible and scalable tool for monitoring and enforcing email policies. MailMarshal ECM simplifies compliance requirements by ensuring email, and all its contents (i.e. text, images, files) adhere to DLP and AUP requirements.



## BENEFITS AND FEATURES

### Simplify Compliance Requirements

Easily set and enforce a wide variety of policies. In addition to pre-set templates (HIPAA, SOX), rules can be customized based on virtually any message criteria: who (sender/receiver), what (keywords, viruses, message size, files, patterns); and how (block, delete, archive, notify). MailMarshal ECM can also auto-archive, retrieve and store messages based on custom criteria.

### DLP

Prevent accidental or malicious data loss with email monitoring and filtering, deep content inspection of attachments, fingerprint technology and lexical dictionaries that can manage distribution of sensitive content. If potential data loss is identified, restricted files can be quarantined and email notifications can be sent to users and managers.

### Enterprise Scalability

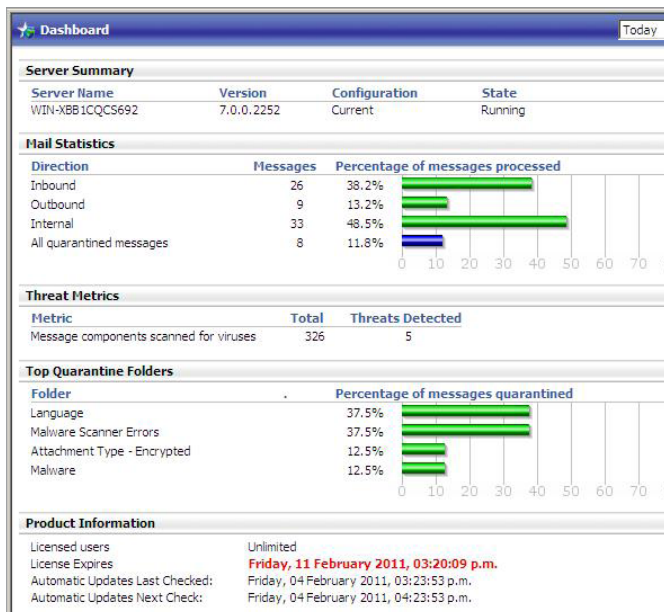
New array/node architecture enables central policy management and reporting for seamless scalability from 200-20,000+ users. The new architecture also supports the Microsoft Exchange high-availability model for essentially no downtime.

### Low Total Cost of Ownership

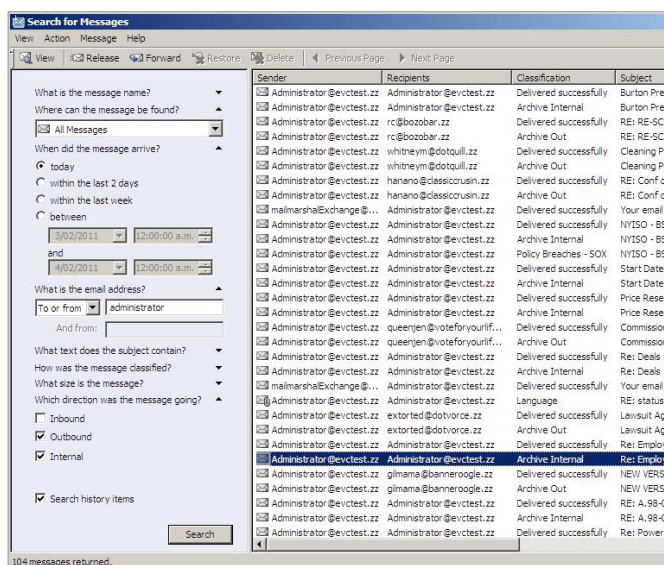
Easy deployment, limitless scalability, minimal administration overhead, consolidated and centralized management along with detailed, centralized and clear reporting in one solution make MailMarshal ECM one of the most cost effective internal email solutions available.

### Optimize Network Efficiency and Improve Productivity

File size and bandwidth control help minimize non-business email, traffic and storage. These controls keep users on task and network bandwidth available for business-critical applications.



Compliance-friendly dashboard and reporting include numerous pre-set templates with drill-down capabilities.



Robust categorization and storage features simplify message tracking, quarantine management and auditing requirements.

## Reporting and Message Classification

Robust, centralized reporting set MailMarshal apart from other email solutions. The MailMarshal Reporting Console (MRC) includes several IT-friendly report templates including:

- Bandwidth Reports by sender, recipient, domain and file type
- Sort and Store messages based on content then recall stored messages for auditing
- Security Reports on attempted policy breaches and potential email abusers

## Image Identification and Detection

Even images can be identified and mitigated if necessary. With deep image analysis, sophisticated body/facial recognition algorithms can recognize inappropriate images in attachments, including pornography.

## ABOUT M86 SECURITY

M86 Security is the global expert in real-time threat protection and the industry's leading Secure Web Gateway provider. The company's appliance, software, and Software as a Service (SaaS) solutions for Web and email security protect more than 25,000 customers and 26 million users worldwide. M86 products use patented real-time code analysis and behavior-based malware detection technologies as well as threat intelligence from M86 Security Labs to protect networks against new and advanced threats, secure confidential information, and ensure regulatory compliance. The company is based in Irvine, California with international headquarters in London and development centers in California, Israel, and New Zealand. For more information about M86 Security, please visit: [www.m86security.com](http://www.m86security.com).

## TRY BEFORE YOU BUY

M86 Security offers free product trials and evaluations. Simply contact us or visit [www.m86security.com/downloads](http://www.m86security.com/downloads)



**Corporate Headquarters**  
8845 Irvine Center Drive  
Irvine, CA 92618  
United States

Phone: +1 (949) 932-1000  
Fax: +1 (949) 932-1086

**International Headquarters**  
Renaissance 2200  
Basing View, Basingstoke  
Hampshire RG21 4EQ  
United Kingdom

Phone: +44 (0) 1256 848 080  
Fax: +44 (0) 1256 848 060

**Asia-Pacific**  
Suite 3, Level 7, 100 Walker St.  
North Sydney NSW 2060  
Australia

Phone: +61 (0)2 9466 5800  
Fax: +61 (0)2 9466 5899

Version 03/02/11